

Jellyfish AD CS Voyager

Your PKI Expert for Enhanced Security Management

The Jellyfish AD CS Voyager is an advanced companion application designed to enhance the Microsoft Windows Active Directory Certificate Services (AD CS) PKI platform. As a PKI expert, Voyager reduces the burden on your security team, making it easy to get up to speed with your organisation's PKI environment. Voyager can be used to update Jellyfish in the cloud, or installed as a standalone reporting tool inside your network.

Unmatched Insight into Your PKI Assets

Voyager probes your Active Directory Domain Services (AD DS) and AD CS, cataloging all your PKI assets into a comprehensive and transparent platform:

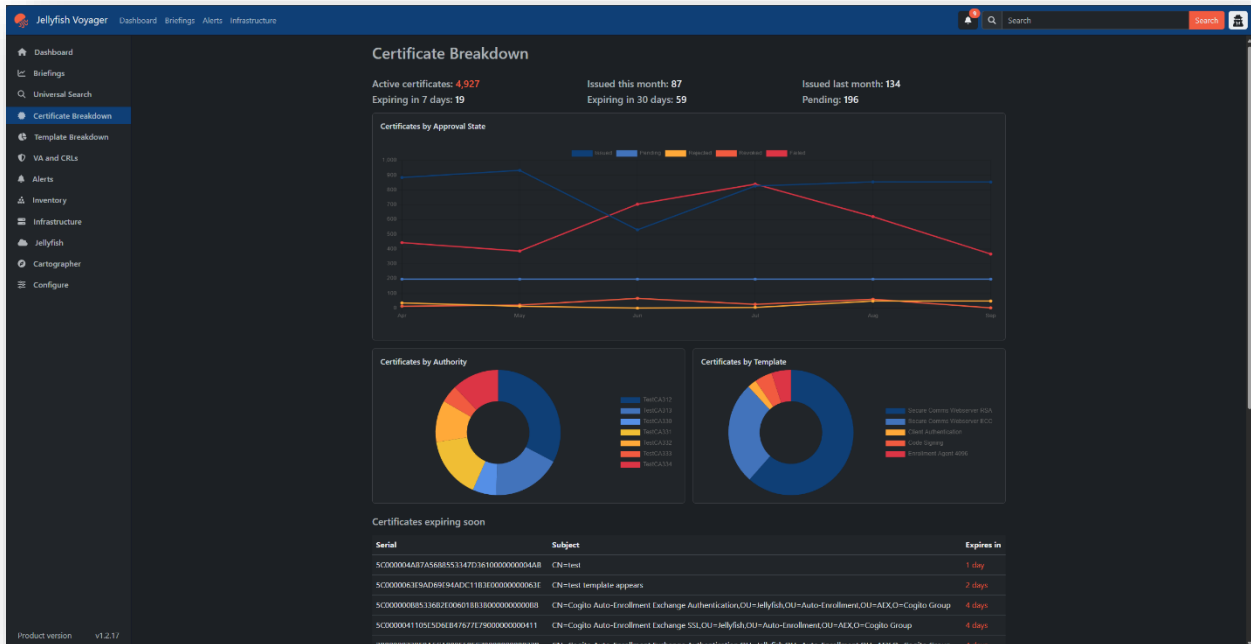
- **Comprehensive Overview:** See all Certificate Authorities across your Active Directory Forest.
- **Template Tracking:** Monitor certificate templates across all authorities, including detailed metrics on requested, issued, rejected, and failed certificates.
- **Revocation Management:** Track Certificate Revocation Lists (CRL), online CRL responders, and OCSP responders.
- **Enrollment Agent Services:** Gain insights into which templates are available and frequently used by enrollment agent services.

Connecting the Dots: Insights and Analytics

Voyager goes beyond traditional tools, connecting your PKI assets to give you actionable insights:

- **Template Usage and Frequency:** Understand which templates are used and how often, guiding your decision to keep or retire them.

- **CRL Management:** Track when and where your CRLs are published and which CRLs are used as OCSPs, ensuring that revocations are efficiently managed.
- **Performance Metrics:** Get detailed metrics on certificates, including issuance throughput, helping you quickly identify and address performance anomalies.



Stay Updated with Alerts and Notifications

Voyager provides proactive alerts, ensuring you're always informed:

- **Threshold Alerts:** Receive notifications when the active certificate count exceeds a set threshold or when certificate issuance rates deviate from normal.
- **Performance Warnings:** Be alerted to high volumes of failed or rejected certificate requests, ensuring prompt attention to potential issues.
- **Service Status Monitoring:** Stay informed when critical AD CS services, online responders, or enrollment agent services are offline.
- **Expiration Warnings:** Get notified when CRLs are about to expire, reducing the risk of unexpected outages.

A PKI Expert at Your Fingertips

Voyager offers features that make understanding and managing your PKI effortless:

- **Briefings and Insights:** Regular, detailed briefings keep your security team updated on the status and health of your PKI.
- **Streamlined Operations:** Voyager reduces the workload of your security team by automating complex PKI data collection and analysis tasks, allowing your experts to focus on strategic decision-making.
- **Quick Onboarding:** Voyager's intuitive interface and expert analysis make getting up to speed easy, even for those new to PKI management.

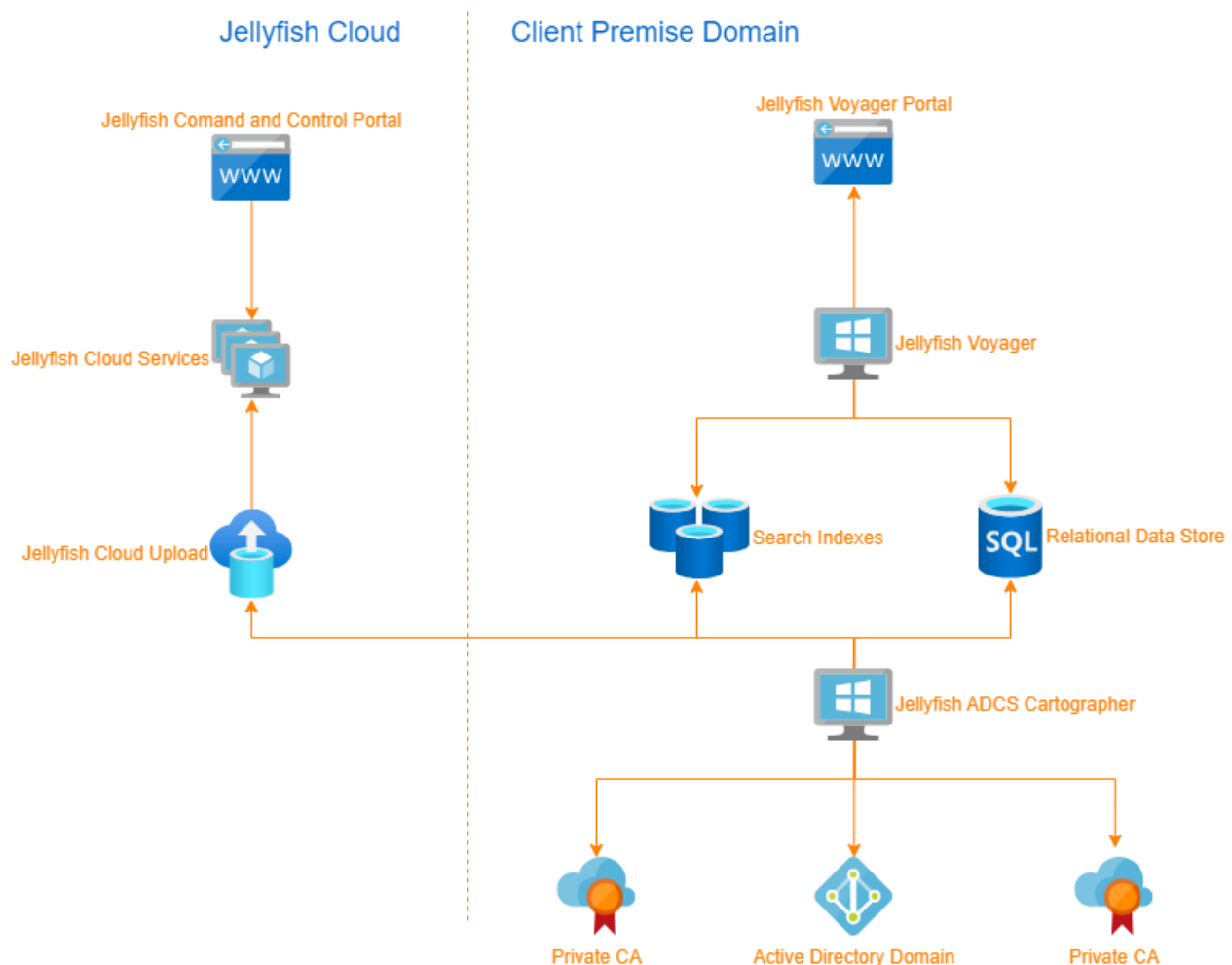
The screenshot shows the 'Universal Search' interface in the Jellyfish Voyager application. The search criteria are 'taastz2008 server authentication 202409'. The results table contains the following data:

Serial	Subject	SANs	Usages	Validity	Status	Score
6R63DCM088171307A8D3AM 651 36308743834512	CN=TAASTZ2008, OU=DMZ, OU=Testing, O=Cogitose	taastz2008.dms.sas.test	Client Authentication, Server Authentication, Digital Signature	20240916-20240914	Expired	73
114633F19329C38995C288063CA4DA2CC35490	CN=TAASTZ2008, OU=DMZ, OU=Testing, O=Cogitose	taastz2008.dms.taas.test	Client Authentication, Server Authentication, Digital Signature	20240927-20240927	Expired	61
4E4E4408100E3A9E3A51A3784D66D18983F181C	CN=TAASTZ2008, OU=DMZ, OU=Testing, O=Cogitose	taastz2008.dms.taas.test	Client Authentication, Server Authentication, Digital Signature	20240918-20250918	Active	61
5C0000077C872C951828B1C9800000000077C	CN=TAASTZ2008, OU=DMZ, OU=Testing, O=Cogitose	taastz2008.dms.taas.test	Client Authentication, Server Authentication, Digital Signature	20240911-20250911	Active	61
280001699AF3891A44D3E796E000000001699	CN=TAASTZ2008	taastz2008.dms.sas.test, taastz2008.dms.taas.test	Client Authentication, Server Authentication, Digital Signature	20240911-20250911	Active	61
470588B3358630C11A8979C8F 4238E5830847	CN=TAASTZ2008, OU=DMZ, OU=Testing, O=Cogitose	taastz2008.dms.sas.test	Client Authentication, Server Authentication, Digital Signature	20240927-20240927	Expired	61
280000069624383848D591884000000000040	CN=TAASTZ2008, OU=DMZ, OU=Testing, O=Cogitose	taastz2008.dms.taas.test	Client Authentication, Server Authentication, Digital Signature	20240927-20240927	Expired	61
28000005F85DF39F8762C309800000000002F	CN=TAASTZ2008, OU=DMZ, OU=Testing, O=Cogitose	taastz2008.dms.taas.test	Client Authentication, Server Authentication, Digital Signature	20240908-20250908	Active	61
5C00000E84D4502EE89F9811000000000E8B	CN=TAASTZ2008, OU=DMZ, OU=Testing, O=Cogitose	taastz2008.dms.taas.test	Client Authentication, Server Authentication, Digital Signature	20240908-20250908	Active	61
09247D5A8601F7A7684602D4990CT093	CN=SCEP	taastz2008.dms.sas.test, taastz2008.dms.taas.test, taastz2008.dms.sas.test, taastz2008.dms.taas.test	Server Authentication, Enrollment Agent, Key Exchange	20240901-20250901	Active	58
796408674E00F28D28A7C9585F80300DF6AACS3	CN=SCEP	taastz2008.dms.taas.test, taastz2008.dms.sas.test, taastz2008.dms.sas.test, taastz2008.dms.taas.test	Server Authentication, Enrollment Agent, Key Exchange	20240908-20250908	Active	58

Advanced Technology for Superior Performance

Voyager's technology surpasses what's available through standard AD CS software, offering specialized capabilities:

- **Cartographer:** Rapidly iterates through the ESENT database, providing fast, non-intrusive access that doesn't impact other tools.
- **Shadow Catalogue:** Seamlessly accesses the ESENT database through an AD CS-facilitated pass-through, ensuring smooth and uninterrupted operation of Certificate Authority services.



Versatility for Every Scenario

Whether for data analysis, operational effectiveness or Certificate Authority migration, Voyager's versatility and powerful analytics make it an essential tool. It empowers your team with the insights needed to make informed security decisions, enhancing operational efficiency and PKI stability.

Jellyfish AD CS Voyager puts you in the pilot seat, offering confidence in your PKI's stability, availability, and security. Trust Voyager to be your expert guide, making your PKI operations simpler, more transparent, and highly effective.

About Cogito Group

Cogito Group is an award-winning, Australian owned and operated ICT company, specialising in authentication, cloud security, identity management and data protection. Cogito Group protect the authentication methods used to access information through the use of Identity and other security technologies. Cogito Group protect data not only from unauthorised access and disclosure, but also from being altered by an unauthorised third party or a trusted insider with malicious intent. This assists in the detection and prevention of fraud or other malicious activities by third parties or trusted insiders.